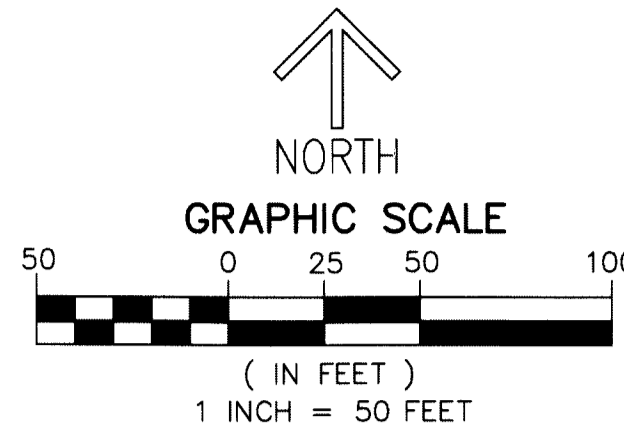


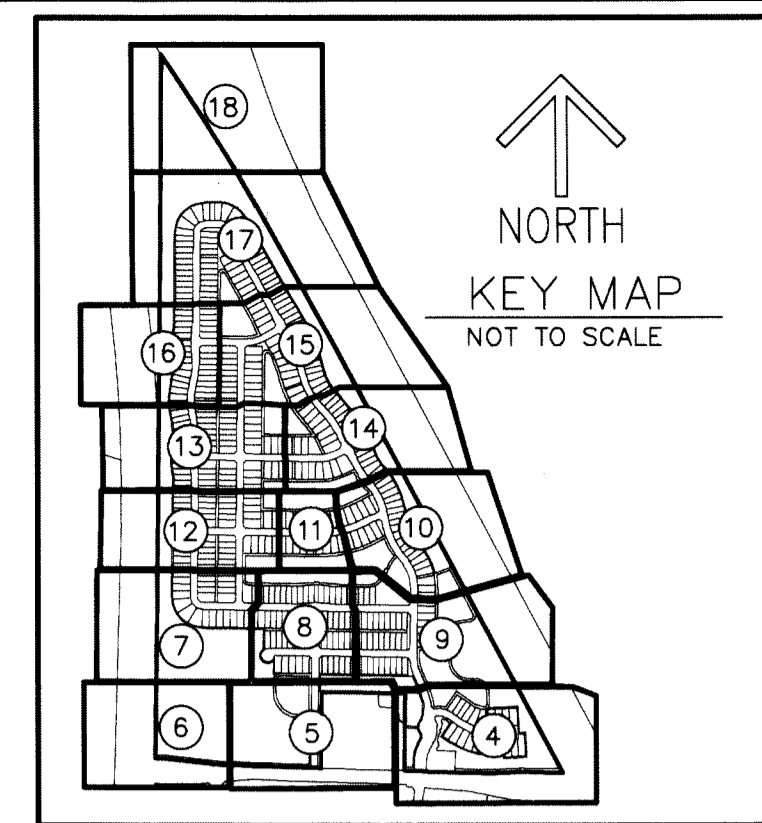
- LEGEND/ABBREVIATIONS**
- CL - CENTERLINE
  - Δ - DELTA (CENTRAL ANGLE)
  - CB - CHORD BEARING
  - CD - CHORD DISTANCE
  - L - ARC LENGTH
  - LAE - LIMITED ACCESS EASEMENT
  - LB - LICENSED BUSINESS
  - LSE - LIFT STATION EASEMENT
  - O.R.B. - OFFICIAL RECORD BOOK
  - R - RADIUS
  - (R) - INDICATES RADIAL LINE
  - SUA/E - SEACOAST UTILITY AUTHORITY EASEMENT
  - UE - UTILITY EASEMENT
  - WME - WATER MANAGEMENT EASEMENT
  - PRM - DENOTES PERMANENT REFERENCE MONUMENT
  - - DENOTES PERMANENT CONTROL POINT



# ARTISTRY

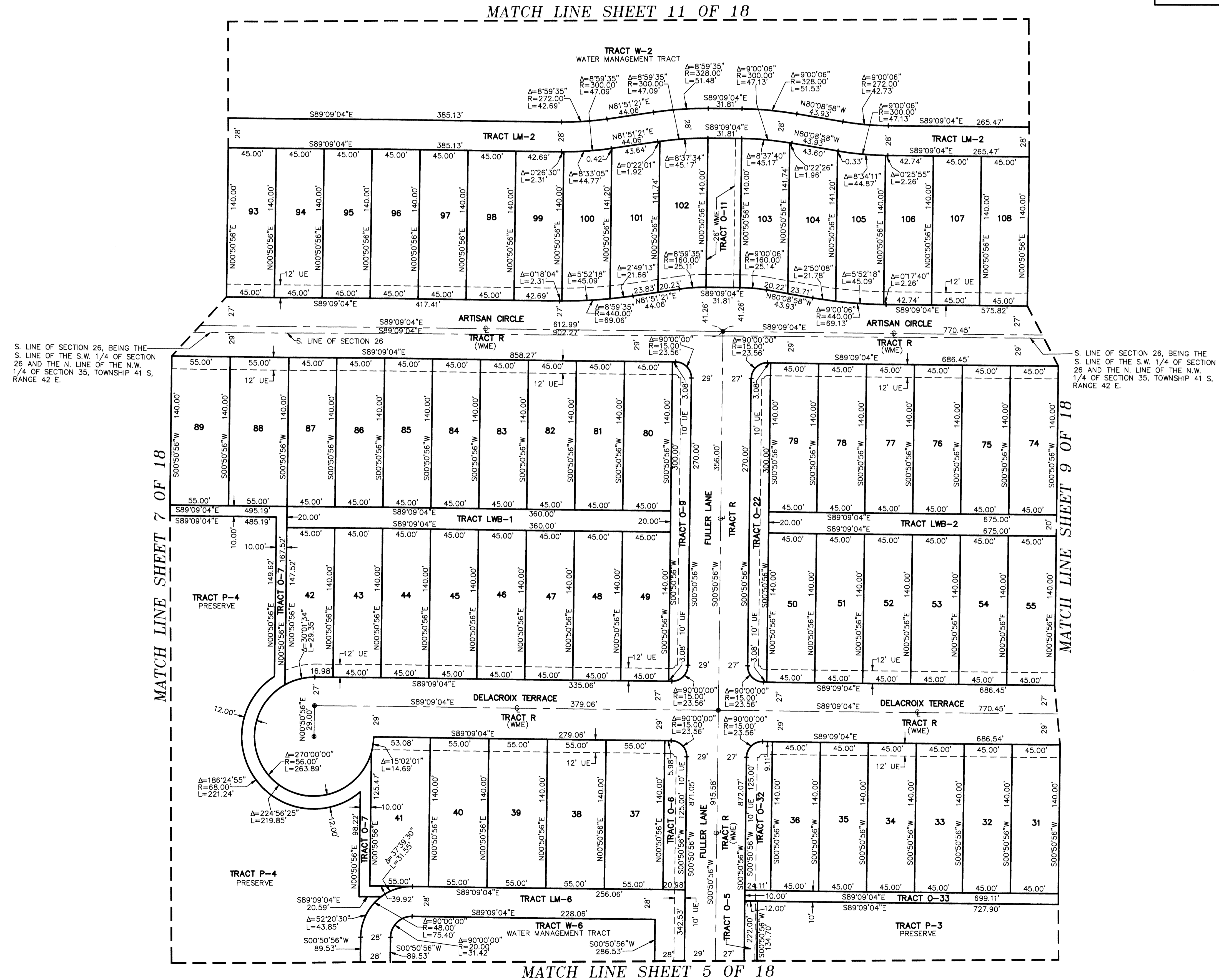
BEING A REPLAT OF TRACT "GH", ALTON PCD,  
AS RECORDED IN PLAT BOOK 118, PAGES 197 THROUGH 206, OF THE PUBLIC RECORDS OF PALM BEACH COUNTY, FLORIDA,  
LYING IN SECTIONS 26 AND 35, TOWNSHIP 41 SOUTH, RANGE 42 EAST, CITY OF PALM BEACH GARDENS, PALM BEACH COUNTY, FLORIDA

THIS INSTRUMENT PREPARED BY  
DAVID P. LINDLEY  
OF  
**CAULFIELD and WHEELER, INC.**  
SURVEYORS - ENGINEERS - PLANNERS  
7900 GLADES ROAD, SUITE 100  
BOCA RATON, FLORIDA 33434 - (561)392-1991  
CERTIFICATE OF AUTHORIZATION NO. LB3591  
JULY 2017



# 33

STATE OF FLORIDA  
COUNTY OF PALM BEACH  
THIS PLAT WAS FILED FOR  
RECORD AT \_\_\_\_\_ M.  
THIS \_\_\_\_\_ DAY OF \_\_\_\_\_  
A.D. 20\_\_\_\_ AND DULY RECORDED  
IN PLAT BOOK \_\_\_\_\_ ON  
PAGES \_\_\_\_\_ AND \_\_\_\_\_  
SHARON R. BOCK  
CLERK AND COMPTROLLER  
BY: \_\_\_\_\_  
DEPUTY CLERK



S. LINE OF SECTION 26, BEING THE S. LINE OF THE S.W. 1/4 OF SECTION 26 AND THE N. LINE OF THE N.W. 1/4 OF SECTION 35, TOWNSHIP 41 S, RANGE 42 E.

S. LINE OF SECTION 26, BEING THE S. LINE OF THE S.W. 1/4 OF SECTION 26 AND THE N. LINE OF THE N.W. 1/4 OF SECTION 35, TOWNSHIP 41 S, RANGE 42 E.

MATCH LINE SHEET 7 OF 18

MATCH LINE SHEET 9 OF 18

MATCH LINE SHEET 5 OF 18